

FindWay Hydraulic Source Co.,Ltd.

Chinese Leader in Piston Pumps & Motors Manufacturing



Product Classification



01 Fixed
Piston Pump



03 Piston
Motor



02 Variable
Piston Pump



Axial Piston hydraulic Motors:

Rexroth----A2FM & A2FE & A6VM

Radial Piston hydraulic Motors:

Rexroth----MCR03, MCR05; & SAI--- GM1, GM2, GM3, GM4, GM5
Staffa----HMB & HMC & Hagglands CA and CB

Piston hydraulic Pumps:

Rexroth---- A10V(S)O & A2FO & A4VG & A7VO & A11VO
Vickers----- PVB/PVH/PVQ series pumps



Your reasonable supplier of Pumps & Motors.

Axial Piston Fixed Hydraulic Motor/ Pump



A2FM/A2FE/A2FO--61 Series Fixed Piston Hydraulic Pump/Motors were made in China, with higher quality and competitive Price, also faster delivery Time. All of the function and details mounting Dimension as the same as Original Rexroth Brand.

All of the Pump/Motor with 61 type Index..

1、 FINDWAY A2FE/61 Axial Bent Fixed Piston Hydraulic Motor



Ordering Code for standard A2FE Size:

Model	Size(NG)						
A2FE/61 Type	45	56	63	80	90	107	125

Products Application:

The A2FE/61 series motor use for Implement Hydraulics and Travel Drive system of Mobile Equipment:
**Wheeled Excavator; Mining Excavator;
 Fork Lift Trucks; Harvester;
 Materials Handling; Drilling Rigs;
 Airport equipment and Rollers.**

Top Supplier with Cheapest Price in China

Machinery reference:



2、FINDWAY A2FM/61 Axial Bent Fixed Piston Hydraulic Motor



Ordering Code for standard A2FM Size:

Model	Size(NG)												
A2FM/61 Type	10	12	16	23	28	32	45	56	63	80	90	107	125

Top Supplier with Cheapest Price in China

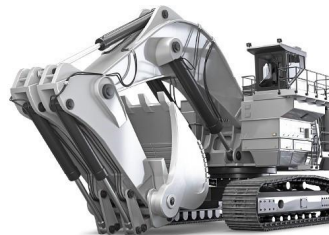
Products Application:

The A2FM/61 motor use for **Implement Hydraulics** and **Travel Drive** system of Mobile Equipment: **Wheeled Excavator; Mining Excavator; Telehandlers; Fork Lift Trucks; Harvester; Concrete mixers;**

Materials Handling: Drilling Rigs; Mobile cranes; Airport equipment; Rollers; Crawler cranes; Crushers and screens; Aerial work platforms; Municipal vehicles ; Heavy duty vehicles;

Machinery reference:

Construction Machinery:



Material Handling



3、 FINDWAY A2FO/61 series Axial Bent Fixed Piston Hydraulic Pump



Ordering Code for Standard A2FO Size:

Model	Size(NG)												
A2FO/61 Type	10	12	16	23	28	32	45	56	63	80	90	107	125

Top Supplier with Cheapest Price in China

Products Application:

The A2FO/61 pump use for Implement Hydraulics and Travel Drive System of Concrete Pumps.

Products Application:



Features of Rexroth A2FM /A2FE/A2FO axial bent Fixed piston

hydraulic motor & pump:

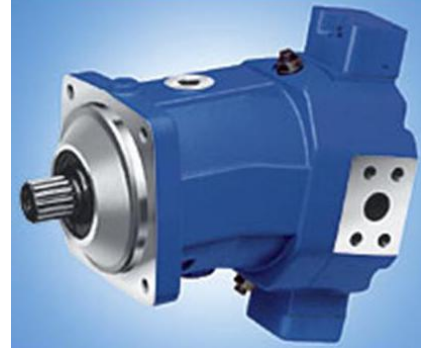
1. Bent axis design with fixed displacement
2. Completely interchangeable with original
3. For use as either pump or motor in hydrostatic drivers, in open of closed circuit
4. High performance rotary group with well-proven spherical control area with the advantages; self-centering low peripheral speed, high efficiency
5. Robust rolling bearings endure long service life
6. Drive shaft capable of adopting radial loading

Axial Piston Variable Hydraulic Motor

FINDWAY A6VM/63 series Axial Variable Piston Motor

Ordering Code for Standard A6VM/63 Size:

Model	Size(NG)						
A6VM/63	28	55	80	107	250	355	500



Products Application:

The A6VM/63 Axial Piston Motor use for Implement Hydraulics and Travel Drive System of Mobile Equipment:

Excavators, Wheel Loaders, Backhoe Loaders, Telehandlers, Rollers, Concrete mixers, Dumpers, Combine and forage harvesters, Harvesters, Forwarders, Mobile cranes, Crawler cranes, Municipal vehicles, Airport equipment, Heavy duty vehicles and so on.

Machinery reference:



Axial Piston Variable Hydraulic Pump



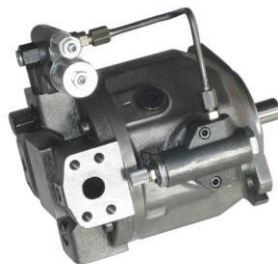
A10V(S)O 31/32 Series Variable Axial Piston Hydraulic Pump
Pump/Motors were made in China, with higher quality and competitive Price, also faster delivery Time. All of the function and details mounting dimension as the same as Original Rexroth Brand.

All of the Pump with 31 and 32 type Index..

A10V(S)O- 31(32) Series Pump

CHARACTERISTIC:

- 1 Swash plate design axial variable piston pump used in open circuit.
- 2 Continuous work pressures can reach 280bar; the highest instantaneous work pressure can reach 350bar.
- 3 The flow is directly proportional to the drive rotate speed and the displacement, and can make stepless variable come true by adjusting the obliquity of the swash plate.
- 4 There are various of control type such as DR, DFR, DFLR etc. and the control response is very fast.
- 5 Low noises level, High efficiency, High reliability and long time service life.
- 6 Small volume, High power density.
- 7 Excellent oil absorbency.
- 8 Axial and radial loading of drive shaft possible
- 9 SAE and ISO mounting flange



1、FINDWAY Open Circuit A10VO 31/32 series Variable Axial Piston Pump



Ordering Code for standard A10VO Size:

Model	Size(NG)					
A10VO/31 Type	18	28	45	71	100	140

Top Supplier with Cheapest Price in China

Products Application:

The **A10VO** Pumps use for Implement Hydraulics and Travel Drive system of
Mobile Equipment: Wheeled Excavator; Mining Excavator; Compact excavators;
 Wheeled loaders; Backhoe loaders; Dumpers; Fork Lift Trucks; Pavers and road milling
 machines; Concrete pumps;

Agricultural and Forestry Machinery: Harvesters; Forwarders; Skidders

Materials Handling: Mobile cranes; Crawler cranes; Fork lift trucks; Large lift trucks
 and container handling; Underground and mining machines; Aerial work platforms;

On- Highway and Commercial Vehicles: Municipal vehicles; Airport equipment;
 Heavy duty vehicles.

Construction Machinery



Agricultural and Forestry Machinery



Material Handling



On- Highway and Commercial Vehicles



2、 FINDWAY Opened Circuit A10VSO 31/32 Variable Axial Piston Pump

Ordering Code for standard A10VSO Size:

Model	Size(NG)					
A10VSO/31 Type	18	28	45	71	100	140



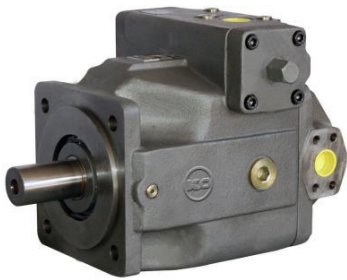
Products Application:

The **A10VSO** pumps use for Industrial Hydraulics and Electro-Hydraulic control Systems:
Shearing, Bending and Spinning Machine;
Tire Presses Machine; Extrusion Machine;
Nibbling Machine and Forming Machine and son...

Top Supplier with Cheapest Price in China

3、FINDWAY Closed Circuit A4VG/ 32 series Variable Axial Piston Pump

Ordering Code for standard A4VG/32 Pump Size:



Model	Size(NG)							
A4VG/32 Type	28	40	56	71	90	125	180	250

Products Application:

The **A4VG/32** Pumps use for Implement Hydraulics and Travel Drive system of Mobile Equipment:
Wheeled Excavator; Mining Excavator; Compact excavators; Wheeled loaders; Backhoe Loaders; Telehandlers; Fork Lift Trucks; Harvester; Dumpers;

Materials Handling: Forwarders; Skidders; Crawler cranes; Underground and mining machines; Aerial work platforms; Municipal vehicles; Heavy duty vehicles; Airport equipment; Rollers;

Machinery Reference

Construction machinery



Agricultural and Forestry Machinery



Material Handling



4、 FINDWAY Opened Circuit A7VO/ 63 series Variable Axial Piston Pump



Ordering Code for standard A7VO/63 Pump Size:

Model	Size(NG)				
A7VO/63 Type	28	55	80	107	160

Products Application:

The A7VO/63 Pumps use for Implement Hydraulics And Travel Drive system of Mobile Equipment:

It is a Heart of Excavators.

Wheeled Excavator; Mining Excavator;

Compact excavators;

Machinery Reference



The Findway Piston Pumps/Motors have proven itself in many applications.

These Units widely used for Mobile & Industrial Equipment.

All of the complete units and parts are fit, form and function replacements for Rexroth components.

4.1 FINDWAY Opened Circuit PVB series Variable Axial Piston Pump



Ordering Code for standard PVB Pump Size:
PVB5,PVB6,PVB10,PVB15,PVB20,PVB29

The PVB series light piston pump has low noise,hi efficiency, small size, light weight and long life. It is widely used in variable industrial Machinery.

It can replace with the Vickers PVB series piston pump.

4.2 Findway PVQ series Variable Piston Pump

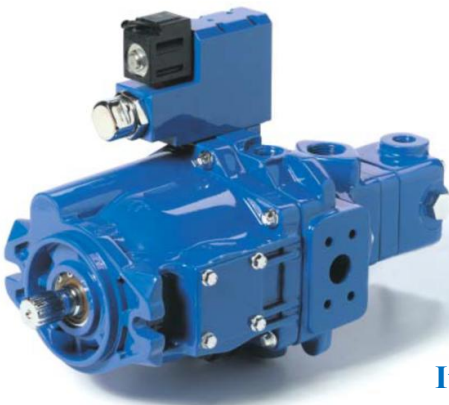


Ordering Code for standard PVB Pump Size:
PVQ10,PVQ13,PVQ20,PVQ32

The PVQ series piston pump is middle-pressure swash plate type. It has low noise and smooth, widely used for variable industrial machinery.

It can replace with the Vickers PVQ series piston pump.

4.3 Fundway PVH series Variable Piston Pump



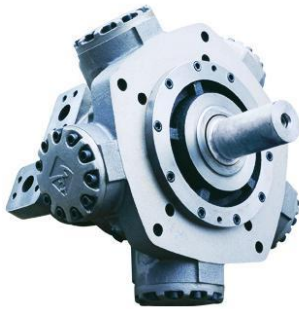
Ordering Code for standard PVB Pump Size:
PVH57,PVH74,PVH98,PVH131

The PVH series piston pump has compact structure, light weight, high efficiency, long life, low noise and variable control way. It is widely used for variable industrial machinery.

It can replace with the Vickers PVH series piston pump.

Radial Piston Hydraulic Motor

1、STAFFA HMB and HMC series Radial Piston Hydraulic Motor



Ordering Code for standard HMB/HMC Size:
B80, B100, B125, B150, B200, B270, B325
C100, C125, C200, C270, C325

Products Application:

The STAFFA HMB/HMC series Radial hydraulic Motors use for all kinds of hydraulics transmission Systems. Such as Plastic Injection machine; Deck machine, construction machinery, hoist, Transport Vehicle, Heavy metallurgical machinery, and son on...



2、HAGGLUNDS series Radial Piston Hydraulic Motor



Ordering Code for standard HMB/HMC Size:
CA50, CA70, CA100, CA140, CA210
CB280, CB400, CB560, CB840, CB1120

Products Application:

The Hagglunds CA/CB series Radial Piston hydraulic motors use for requiring high torque, low speeds and variable speeds. The drive systems are used in a wide range of industries, such as Mining and materials handling, Marine and offshore, Recycling, Sugar, Pulp and paper, Rubber and plastics, and Building and construction.

Machinery Reference



3、SAI GM series Piston hydraulic Motor



Ordering Code for standard GM motor Size:

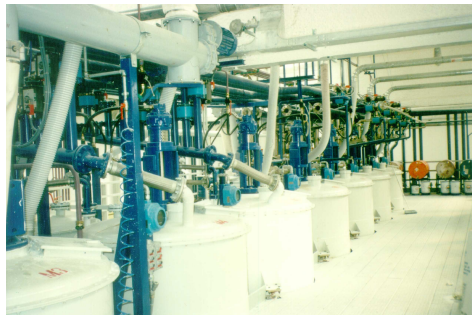
Model	Displacement(ml/r)							
	60	75	110	130	150	170	200	
GM05	60	75	110	130	150	170	200	
GM1	100	150	175	200	250	300	320	
GM2	200	250	300	350	420	500	600	
GM3	350	425	500	600	700	800	900	1000
GM4	400	500	600	800	900	1000	1100	1250
GM5	525	650	800	1000	1200	1300	1450	1600

Top Supplier with Cheapest Price in China

Products Application:

The SAI GM series Radial hydraulic Motors use for all kinds of hydraulics transmission Systems. Such as Cement & Stone Crusher, Drilling, Guided Boring Machine, Material Handler, Mixers, Oil Pump, Pipes Conveyor, Power Tong, Rotary Table, Shredder, Slurry & Water Pump, Steel Mill, Windmill, Wire Tensioner, Cable Laying, Capstan, Davit, Dregging, Fish Pump, Hatch Cover, Marine Winch, Off Shore Rig, Ship Transporter, Trenching, also Mobile Machinery, Plastic injection Machinery and son on...

Machinery reference:



4、 FINDWAY MCR Radial Piston High Torque Hydraulic Motor

Ordering Code for standard MCR motor Size:



Motor	DISPLACEMENT							
MCR3	160CC	225CC	255CC	280CC	325CC	365CC	400CC	
MCR5	380CC	470CC	520CC	565CC	620CC	680CC	750CC	820CC

MCR03/MCR05 Application:

The MCR03/MCR05 series motor is widely used in Road building and road maintenance machinery, Earth moving equipment, Drilling and trenching equipment, Agricultural machinery, Forestry equipment, and so on.

Machinery: Roller, Soil compactor, Road Roller, Break equipment

MCR3A400A45Z32B2M USED FOR CATERPILLAR 226B SKID STEER LOADER



MCR5C820F180Z32B4V1L12F6P0S0428J USED FOR BOBCAT T190,T200 SKID STEER LOADER



5、Poclairn MS Radial Piston High Torque Hydraulic Motor



**Ordering Code for standard MS motor Size:
MS05, MS08, MS11, MS18, MS25, MS35**



MS08/MSE08 Application:

The MS08/MSE08 series motor is widely used in Road building and road maintenance machinery, Earth moving equipment, Drilling and trenching equipment, Agricultural machinery, Forestry equipment, and so on.

Machinery: Roller, Soil compactor, Road Roller, Break equipment

Machinery Reference

MS08-9-12A-A08-1120-DEJMO IS USED IN BELL 220A TELELOGGER AND JOHN DEERE FOREST MACHINERY



MS18/MSE18 Application:

The MS18/MSE18 series motor is widely used in Road building and road maintenance machinery, Earth moving equipment, Drilling and trenching equipment, Agricultural machinery, Forestry equipment, and so on.

Machinery: Roller, Soil compactor, Road Roller, Break equipment

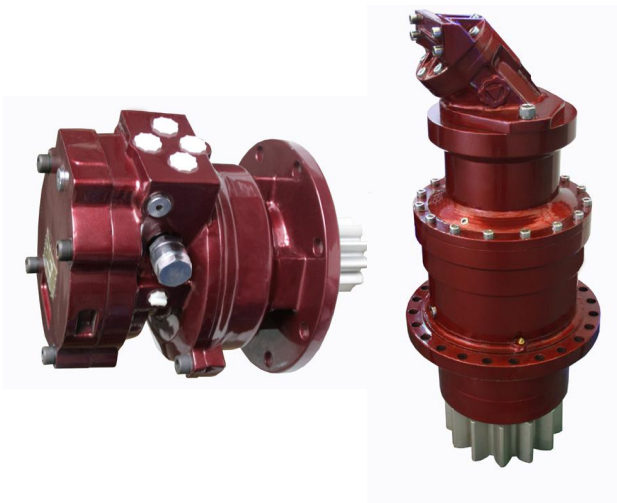
MS18-2-121-A18-1330-00-MR Used for the Hamm 411 Compactor



MSE18-2-A24-F19-1840-5K00 Used for Bomag Pushfiller 211
MS18-2-121-F12-1410-0000 Used for Bomag 213-d-2 Compactor



Hydraulic Transmission Devices



Hydraulic Transmission Devices

Feature:

- Compact, space-saving planetary gearbox design;
- Modular Design;
- Easy installation and repair;
- Planetary frame adopts the structure Design of arm support;
- Double bearing support, operation Stability;
- Low-noise running operation;
- With or without Brake.

Details Size of hydraulic transmission devices

Number of Gear Stages	Total Displacement	Rated torque (N.m)	Speed	Total efficiency
	ml/r	20Mpa		
2.5	575	1630	0-100	0.89-0.92
	645	1826		
	755	2136		
	830	2350		
	955	2706		
	1050.5	2976		

Number of Gear Stages	Total Displacement	Rated torque (N.m)	Speed	Total efficiency
	ml/r	20Mpa		
3.0	1215	3382	0-90	0.89-0.92
	1450	4022		
	1570	4361		
	1735	4823		
	1908	5306		
	2338	6492		

Number of Gear Stages	Total Displacement	Rated torque (N.m)	Speed	Total efficiency
	ml/r	20Mpa		
4.0	2430	6860	0-80	0.91-0.92
	2975	8398		
	3450	9774		
	3960	11222		
	4356	12344		
	4801	13538		

The Gear Stages Rated can be choice: 2.5, 3.0, 4.0, 5.0, 6.0, 2.53, 34, 45, 56

The displacement range: 550---28000 ml/r

The Rated Torque: 3400---63000 N.m